



Internet Access

PRODUCTION CONNECTIVITY

valid since 20 July 2020

DOCUMENT SERIES

NETWORK CONNECTIVITY SOLUTIONS - PRODUCTION ENVIRONMENT

- [MCG1001 Colocation](#)
- [MCG2001 ConnectME](#)
- [MCG3001 Universal scheme](#)
- [MCG4001 International points of presence](#)
- [MCG5001 VPN connection](#)

▶ [MCG6001 Internet access](#) ◀

NETWORK CONNECTIVITY SOLUTIONS - TESTING ENVIRONMENT

- [MCG1101 Colocation](#)
- [MCG2101 ConnectME](#)
- [MCG4101 International points of presence](#)
- [MCG6101 Internet access](#)

NAVIGATION

- [Overview](#)
- [Technical diagram](#)
- [Supported hardware](#)
- [Network connection requirements](#)
- [Addressing plan](#)
- [Equipment setup](#)
- [How to get started](#)
- [How to get technical support](#)
- [Authorized network service providers](#)
- [FAQ](#)

OVERVIEW

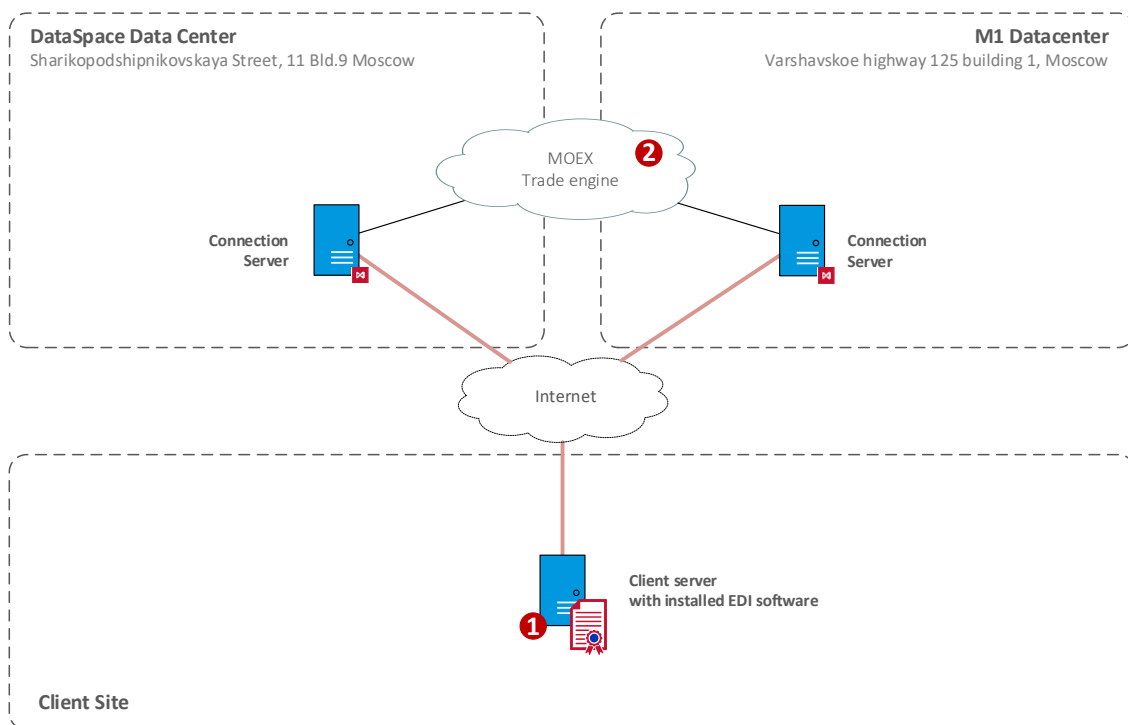


Internet access is a service for organizing technical access to the content services of the Moscow Exchange via the public Internet without the need for a special network scheme on the client side. The service provides the ability to connect from any place in the world via the Internet connection.

Since the Internet is not a guaranteed medium of data transmission, the stability of a VPN connection is inferior to connections over dedicated circuits. However, the service makes it easy to implement access reservation if there is more than one Internet connection.

Internet access is included in the list of services and software provided under an IT support agreement (ITO Agreement).

TECHNICAL DIAGRAM



- 1** **Client server or workstation** requires encryption through EDI system service <https://www.moex.com/a1259>.
- 2** **MOEX services.** The services of the Derivatives, Equity, Bond and FX markets are available via a VPN connection. The addresses of the Moscow Exchange services are published at <https://www.moex.com/s397>, and can also be provided upon request to the technical support service.

SUPPORTED HARDWARE

For remote access to the services of the Moscow Exchange using public Internet communication channels, no additional equipment is required except for the Client's PC

To work with the terminal, you need a computer with the following configuration:

Subsystem	Минимальные требования
CPU	Intel Core processor or compatible with a clock speed of 1.4 GHz
RAM	2 Гб
Storage	1 GB free space
Display	Resolution from 1280x1024
Operating System	Microsoft Windows 7/8/10, Windows Server 2008/2012/2016
Internet Browser	Microsoft Internet Explorer 9 or newer

NETWORK CONNECTIONS REQUIREMENTS

The bandwidth Client needs is the sum of the following values depending on the number of the services in use and the amount of FAST UDP Multicast feeds:

- 4 Mbit/s multiplied by the number of the gateways/terminals in use

For further details, please read the [Load Test Report](#).

ADDRESSING PLAN

IP addressing for Internet access to the services of the Moscow Exchange is not regulated.

EQUIPMENT SETUP

Instructions for setting up an EDS are included in the MOEX Trade terminals User Guide, which are published at <http://ftp.moex.com/pub/Terminals/ASTS/>

HOW TO GET STARTED

To get started, client must perform the following steps:

- Consult a manager from the technology service sales team by phone on +7 (495) 363-3232, ext. 5656 or email at itsales@moex.com to make sure that the chosen solution best suits client needs, find out what paperwork is required and which next steps should be taken.

HOW TO GET TECHNICAL SUPPORT

If client experiences a malfunction of the Service or have a question regarding the connection to MOEX, the technical support service should be contacted with the following information:

- Company name;
- Connectivity option to MOEX: Internet access;
- IP-addresses used to connect;
- Short issue description;
- **(Optional)** Results of your tests.

Technical support contacts:

T +7 (495) 733-9507, +7 (495) 287-7691,

T +7 (495) 363-3232, ext. 2345

E-mail: help@moex.com

AUTHORIZED NETWORK SERVICE PROVIDERS

Any network service provider might be used.

FREQUENTLY ASKED QUESTIONS

What is the speed and type of connection you are using?

This connection scheme assumes the use of the public Internet, therefore, there is no guarantee of speed or service availability.